

SUBMITTAL DATA: MSZ-GL18NA-U1

18,000 BTU/H WALL-MOUNTED INDOOR UNIT FOR MXZ-C MULTI-ZONE HEAT PUMP SYSTEMS

Job Name:	Location:	Date:
Purchaser:	Engineer:	
Submitted to:	For <input type="checkbox"/> Reference <input type="checkbox"/> Approval <input type="checkbox"/> Construction	
System Designation:	Schedule No.:	



Indoor Unit: MSZ-GL18NA-U1



Wireless Remote Controller

ACCESSORIES:

Indoor Unit

Anti-Allergy Enzyme Filter (MAC-408FT-E)

Controls

Wireless Controller (MHK1)
Wired Remote Controller PAR-31MAA (Requires MAC-333IF-E)
Thermostat Interface (PAC-US444CN-1)

SPECIFICATIONS:

Rated Capacity*		
Cooling ¹	Btu/h / W	18,000
Heating at 47° F ²	Btu/h / W	21,600

Rating Conditions per AHRI Standard:

¹ Cooling | Indoor: 80° F(27° C)DB / 67° F(19° C)WB; Outdoor: 95° F(35° C)DB / 75° F(24° C)WB
² Heating at 47° F | Indoor: 70° F (21° C)DB / 60° F (16° C)WB; Outdoor: 47° F (8° C)DB / 43° F (6° C)WB

For data on specific indoor units (all ducted, all non-ducted, and both ducted and non-ducted) combinations, see the MXZ Technical and Service Manual.

Applications should be restricted to comfort cooling only; equipment cooling applications are not recommended for low ambient temperature conditions.

Electrical Power Requirements	208 / 230V, 1-Phase, 60 Hz	
-------------------------------	----------------------------	--

Minimum Circuit Ampacity (MCA) *	A	1
----------------------------------	---	---

***All electrical work shall comply with National (CEC) and local codes and regulations.**

Blower Motor (ECM)	F.L.A.	0.76
--------------------	--------	------

Blower Motor Output	W	55
---------------------	---	----

Moisture Removal	pt./h	2.1
------------------	-------	-----

Field Drainpipe Size O.D.	In.(mm)	5/8 (15)
---------------------------	---------	----------

Airflow Rate (Quiet - Lo - Med - Hi - Super Hi)			
Cooling	DRY	CFM	259-333-416-523-646
	WET		233-300-375-470-581
Heating	DRY		296-384-469-563-646

Sound Pressure Level (Quiet - Lo - Med - Hi - Super Hi)		
Cooling	dB(A)	28-33-38-44-49
Heating		28-33-38-43-48

External Dimensions (H x W x D)	In.(mm)	12 x 36-5/16 x 9-13/16 (305 x 923 x 250)
---------------------------------	---------	---

Net Weight	Lbs.(kg)	28 (13)
------------	----------	---------

External Finish	Munsell 1.0Y 9.2 / 0.2	
-----------------	------------------------	--

Refrigerant Piping (Flared)		
Liquid (High Pressure)	In.(mm)	1/4 (6.35)
Gas (Low Pressure)		1/2 (12.7)

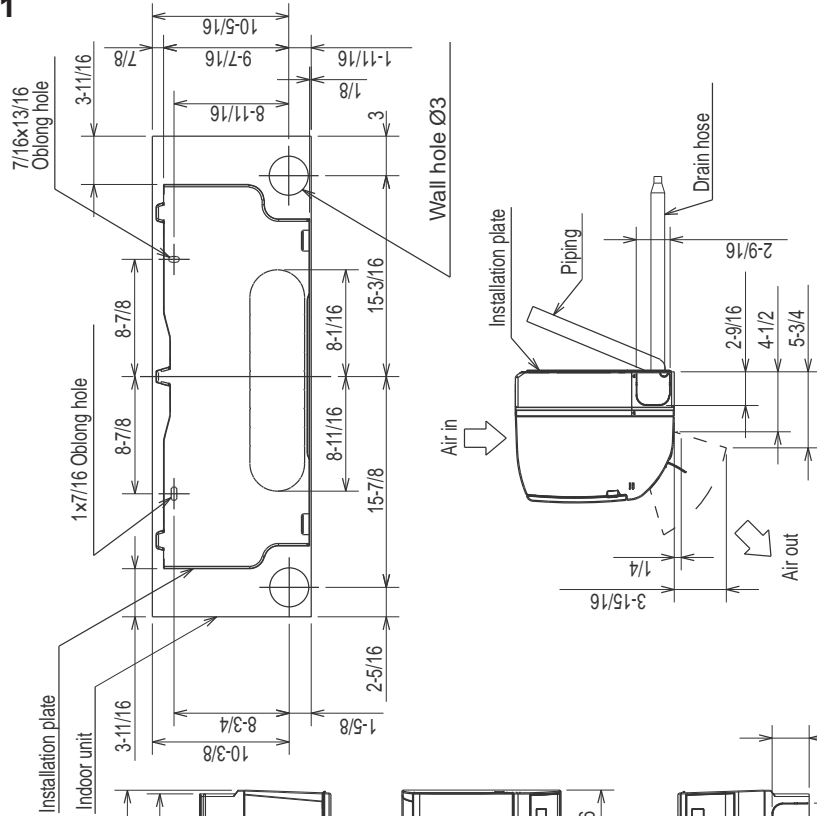
Should this document be altered or changed without MESCA's permission, it becomes null and void. MESCA assumes no responsibility for any consequences in such cases.

Specifications are subject to change without notice.

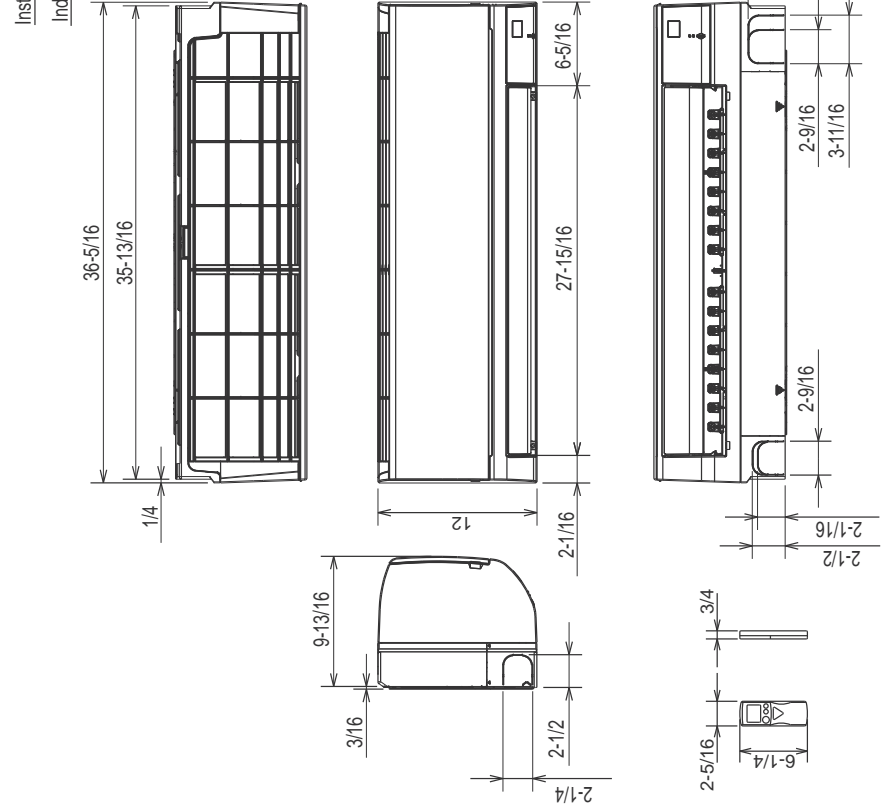
DIMENSIONS: MSZ-GL18NA-U1

MSZ-GL18NA-U1

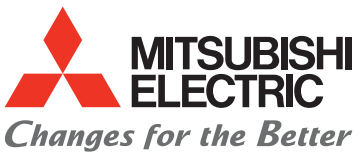
Unit: in. (mm)



Insulation	Ø2 O.D
Liquid line	Ø5/16 15-3/8 (Flared connection Ø1/4)
Gas line	Ø15/32 13-3/8 (Flared connection Ø1/2)
Drain hose	Insulation Ø1-1/8 Connected part Ø5/8 O.D



Should this document be altered or changed without MESCA's permission, it becomes null and void. MESCA assumes no responsibility for any consequences in such cases.



for a greener tomorrow

